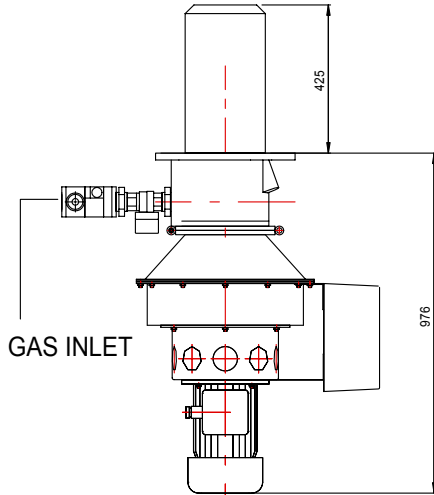


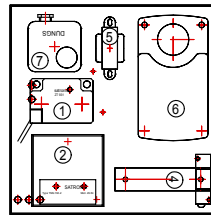


HEATING &  
COMBUSTION

# VJ 50 AUTOMATIC GAS BURNER UPTO 1465 kW (5,000,000 BTU/hr)



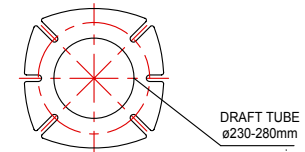
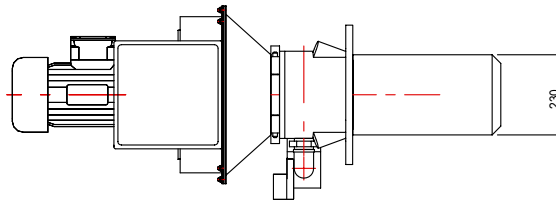
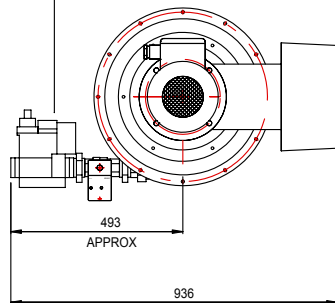
VIEW WITH COVER REMOVED



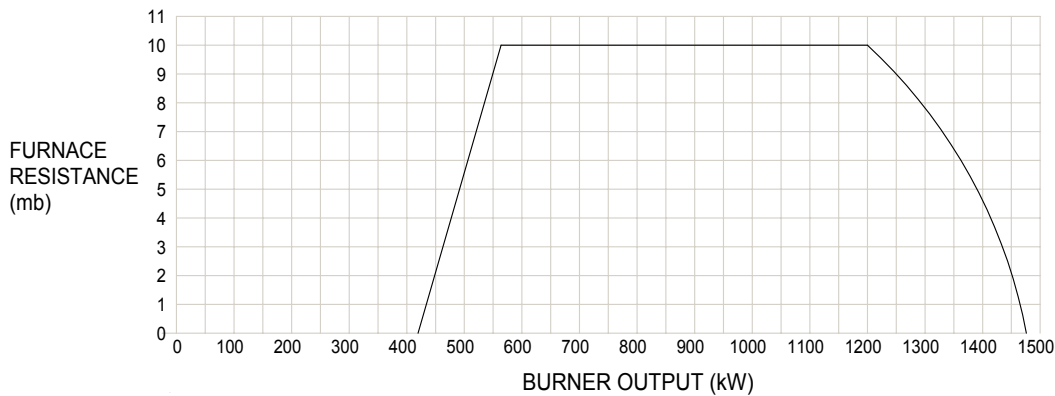
SCALE 2:1

- 1-Ignition Transformer ZT 931
- 2-Control Box TMG 740.3 MOD 43
- 3- 240V Relay
- 4-Terminal Rail
- 5-Transformer 240V-24V
- 6-Mod.Motor M9308 GGA-1N
- 7-Air Pressure Switch LGW 50 A4

GAS VALVE



LARGE MOUNTING FLANGE  
3,500,000 BTU (1,025 KW) to 6,000,000 BTU (1,758 KW)  
Hole size required 390mm  
for draft tube 230 to 280mm  
FIXING: 4 at 320mm to 430mm PCD  
or 2 at 320mm to 380mm horizontal.



ADVANCED COMBUSTION ENGINEERING LIMITED  
UNIT 3 COMMERCE ST.  
CARRS IND. EST.  
HASLINGDEN  
LANCS.  
ENGLAND  
BB4 5JT

Tel: +44(0)1706212218  
Fax: +44(0)1706228735  
E-mail: enq@aceburners.co.uk

