



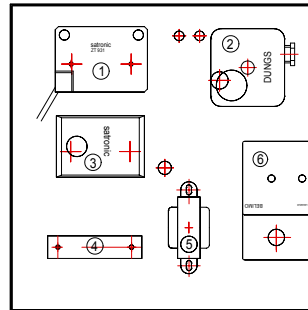
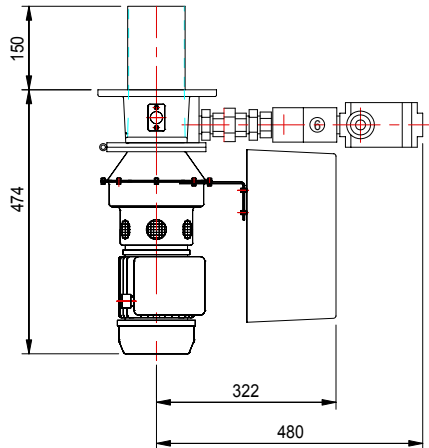
HEATING &
COMBUSTION

VJ MINI AUTOMATIC GAS BURNER

OUTPUT UP TO 117KW (400,000BTU/HR)



PLAN VIEW

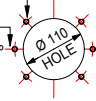


CONTROL PANEL VIEW
WITH COVER REMOVED

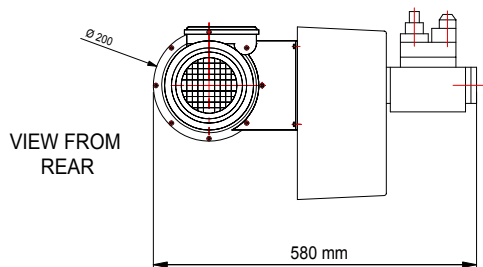
- ① IGNITION TRANSFORMER
- ② AIR PRESSURE SWITCH
- ③ BURNER CONTROL BOX
- ④ TYPE B12 TERMINAL BLOCK
- ⑤ VOLTAGE TRANSFORMER
- ⑥ MODULATING MOTOR

4 - M10 TAPPINGS AT 45°
ON CENTRES BETWEEN
140 P.C.D. TO 220 P.C.D.

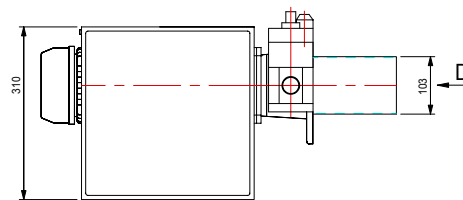
ALTERNATIVELY
2 - M10 TAPPINGS AT 180°
ON CENTRES BETWEEN
140 P.C.D. TO 195 P.C.D.



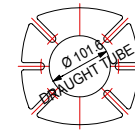
MOUNTING DETAIL



VIEW FROM
REAR



SIDE VIEW



VIEW ON ARROW 'D'
8 - SERIES HEAD

BURNER SIZE	RATING KW	RATING BTU/HR	GAS INLET SIZE
VJM - - 2T	58	200,000	1/2" BSP
VJM - - 4T	102	400,000	3/4" BSP

BURNER TYPE

VJM A - T	Fully Modulating Gas and Air	Most Efficient Operating Method - Lowest Gas Consumption
VJM B - T	Modulating Gas Only - Fixed Air	Linear Control but Less Gas Efficient than Type A
VJM C - T	High/Low/Off Gas and Air	Step Control with Good Efficiency
VJM D - T	High/Low/Off Gas Only - Fixed Air	Step Control - Reduced Efficiency on Low Fire
VJM E - T	Simple On/Off Operation	Lowest Cost - Slow response to Control

Not Suitable where Close Control or High Efficiency are Required